

Monthly Report June 2013

HUPX DAM reached 653 791,9 MWh in June. In the examined month the total traded volume decreased by 11,2% compared to the 736 215,2 MWh achieved in May. The average daily traded volume was 21 793,1 MWh. The highest daily traded volume was 26 298,8 MWh on the delivery day of 1st June. The number of admitted members was 48 in the examined month.

List of the Members



Members

- Alpiq Energy SE
- CEZ, a.s.
- Danske Commodities A/S
- E.ON Global Commodities SE
- Energy Financing Team (Switzerland) AG
- GDF SUEZ Energia Magyarország Zrt.
- GEN-I d.o.o.
- Holding Slovenske Elektrarne d.o.o.
- JAS Budapest Zrt.
- Magyar Áramszolgáltató Kft.
- Mátrai Erőmű Zrt.
- MVM Partner Zrt.
- Statkraft Markets GmbH
- BC-Energiakereskedő Kft.
- Budapesti Erőmű Zrt.
- Citigroup Global Markets Limited
- Compagnie Nationale du Rhone
- DB Energy Commodities Ltd.
- Dunafin Kft.
- EDF Trading Limited
- Edison Trading S.p.A. Magyarországi Fióktelepe
- EGL AG
- Enel Trade S.p.A.
- Ezpada s.r.o.
- Freeport Commodities Europe LLP
- Gazprom Marketing & Trading Ltd
- GDF Suez Trading SAS
- Greenergy-Trade Kft.
- HAMBURGER Hungaria Kft.
- HEP Magyarország Energia Kft
- Interenergo d.o.o.
- ISD Power Kft.
- MAVIR Zrt.
- Mercuria Energy Trading S.A
- Monsson Energy Trading S.R.L.
- Morgan Stanley Capital Group Energy Europe Limited
- ÓAM Ózdi Acélművek Kft.
- OMV Trading GmbH
- PETROL d.d. Ljubljana
- RD CZ ENERGY s.r.o.
- Repower Trading Ceska republika s.r.o
- RWE Supply & Trading GmbH
- S.C. Tinmar S.A
- TRANSENERGO COM S.A.
- Vattenfall EnergyTrading GmbH
- VERBUND AG
- Vitol Gas & Power B.V.
- VPP Erőmű Üzemeltető és Kereskedelmi Zrt.

HUPX Day-Ahead Market

Description	05/2013	06/2013	Change	
HUPX Base Average Price (EUR/MWh)	28,77	33,91	5,14	17,87%
HUPX Peak Average Price (EUR/MWh)	32,82	41,16	8,34	25,41%
Diff. BL. HUPX→OTC	0,93	1,41	0,48	52,08%
Diff. PL. HUPX→OTC	1,19	4,69	3,50	293,79%

Highest Traded Price (EUR/MWh)	90,06	135,03	44,97	49,93%
Lowest Traded Price (EUR/MWh)	0,10	-10,00	-10,10	-10100,00%

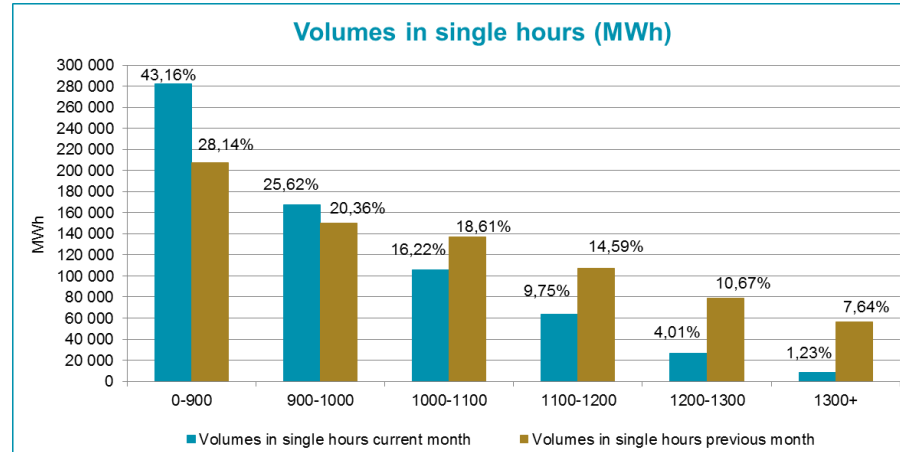
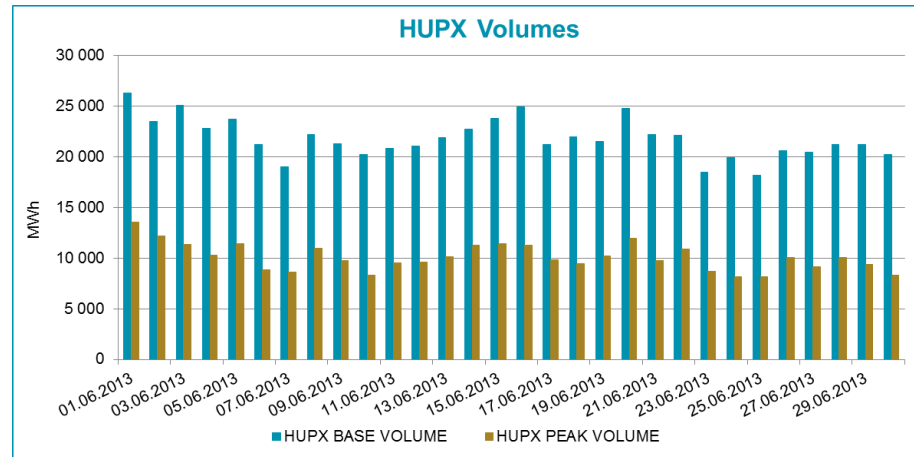
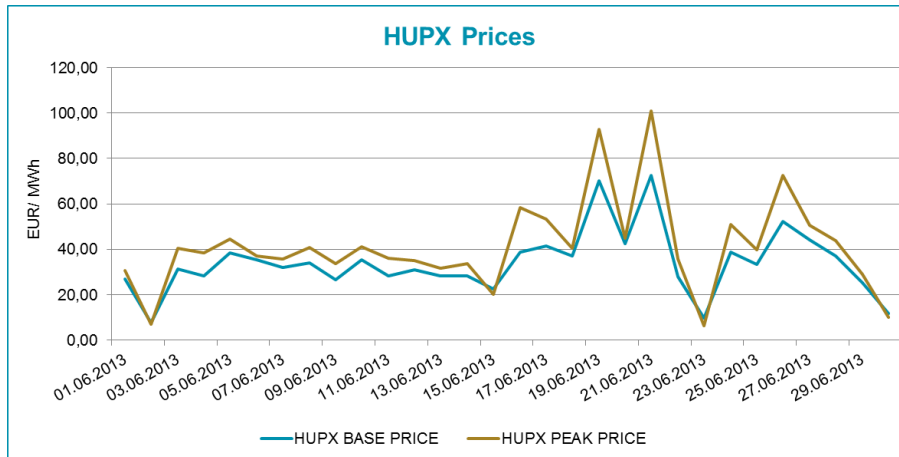
Total Turnover (EUR)	20 855 527	21 940 395	1 084 868	5,20%
Average Daily Turnover (EUR)	672 759	731 346	58 588	8,71%
Max. Daily Turnover (EUR)	1 048 730	1 542 968	494 238	47,13%
Min. Daily Turnover (EUR)	179 069	178 389	-680	-0,38%

Description	05/2013	06/2013	Change	
Total Volume (MWh)	736 215,2	653 791,9	-82 423,3	-11,20%
Average Daily Traded Volume (MWh)	23 748,9	21 793,1	-1 955,8	-8,24%
Highest Daily Traded Volume (MWh)	28 118,2	26 298,8	-1 819,4	-6,47%
Lowest Daily Traded Volume(MWh)	19 259,1	18 127,7	-1 131,4	-5,87%
Highest Hourly Traded Volume (MWh)	1 807,3	1 386,8	-420,5	-23,27%
Lowest Hourly Traded Volume(MWh)	532,2	541,6	9,4	1,77%
Average Hourly Traded Volume (MWh)	989,5	908,0	-81,5	-8,24%

DAM - Weekdays	01-24 (BaseLoad)	01-24 (BaseLoad)		
Average Daily Traded Volume (MWh)	23 981,9	21 502,8	-2 479,2	-10,34%
DAM - Weekend	01-24 (BaseLoad)	01-24 (BaseLoad)		
Average Daily Traded Volume (MWh)	23 078,8	22 373,7	-705,1	-3,06%

DAM - Weekdays	09-20 (Peakload)	09-20 (Peakload)		
Average Daily Traded Volume (MWh)	11 077,6	9 803,3	-1 274,3	-11,50%
DAM - Weekend	09-20 (Peakload)	09-20 (Peakload)		
Average Daily Traded Volume (MWh)	10 862,8	10 630,9	-231,9	-2,14%

HUPX Prices and volumes



Note:

The bar chart shows the traded volumes in single hours in the examined period (01/06/2013-30/06/2013). We categorized the results according to the traded volume of each hour. Compared to the previous month, the distribution of executed volumes shows changes in the traded volumes: the ratio of the range 0 - 900 MWh, 900 – 1 000 MWh increased, while the ratio decreased regarding the 1 000 – 1 100 MWh, 1 100 – 1 200 MWh, 1 200 – 1 300 MWh and 1 300+ MWh.

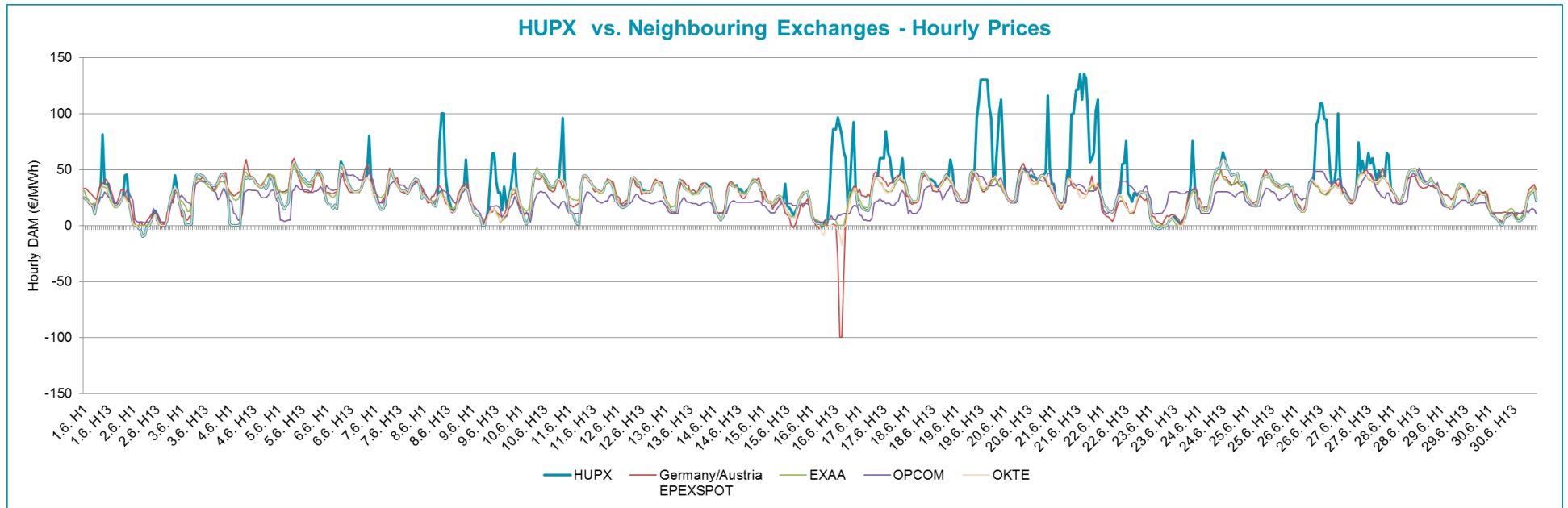
HUPX Day-Ahead Market Traded Volumes
MWh / Delivery day / hour

Delivery hour	06/01	06/02	06/03	06/04	06/05	06/06	06/07	06/08	06/09	06/10	06/11	06/12	06/13	06/14	06/15	06/16	06/17	06/18	06/19	06/20	06/21	06/22	06/23	06/24	06/25	06/26	06/27	06/28	06/29	06/30	TOTAL
00-01	1074.6	1076.4	976.2	909.6	838.1	867.2	794.8	876.8	964.5	944.7	946.7	902.6	770.3	889.1	964.4	1274.3	933.4	883.5	884.2	991.2	1017.9	1028.8	903.1	1007.7	653.6	816.1	870.6	953.2	892.7	985.9	27 892.2
01-02	1044.6	1102.8	1246.7	822.8	858.6	866.7	873.5	874.5	990.9	1112.9	913.3	968.3	852.9	784.8	1088	1222.2	1027.0	1061.4	924.4	975.8	1044.6	994.7	981.8	1139.1	877.1	806.0	935.6	977.9	1069.3	1101.5	29 539.7
02-03	933.5	847.5	1363.7	1003.9	1002.2	1085.9	936.9	866.8	910.6	1305.9	1123.7	1159.1	1182.3	970.6	1207.9	1304.2	1053.0	1089.5	1007.2	1095.8	1178.8	982.3	846.0	1158.8	1019.9	902.5	1040.0	1064.4	1115.4	1113.5	31 871.8
03-04	991.5	704.3	1246.4	1116.7	1058.6	1080.6	1018.6	923.2	926.8	1274.9	1125.8	1124.8	1162.3	1087.8	1187.3	1219	1068.2	1097.2	987.6	1086.6	1199.2	917.4	787.6	1173.3	977.2	904.0	975.7	1053.8	1099.3	1073.4	31 649.1
04-05	958.3	725.3	1121.8	1006.4	977.5	1068.2	988.4	910.2	927.2	1183.9	1072.2	1115.0	1104.3	1066.1	1340.2	1198.1	997.9	1081.6	1021.4	1100.9	1166.9	975.2	813.0	1127.2	948.6	899.5	981.8	1030.9	1110.4	1072.1	31 090.5
05-06	992.2	717.2	1017.0	1002.9	838	1029.4	883.0	937.2	961.8	993.2	1071.5	1027.8	1075.0	827.0	1286.2	1121.5	831.1	1094.9	833.0	856.1	1004.7	1052.2	806.4	1124.4	820.7	733.2	874.9	904.6	1063.6	1084.7	28 865.4
06-07	970.8	805.0	959.3	1038.3	907.7	892.9	728.8	985.1	894.1	702.0	739.0	839.8	835.1	944.2	1040	1152.4	665.8	849.8	782.4	1116.3	749.3	925.9	791.7	612.4	685.5	872.4	985.1	752.7	938.0	820.3	25 982.1
07-08	972.3	925.1	1259.6	1147.4	1100.6	1253.0	963.5	880.8	883.2	910.1	945.8	915.7	1066.5	1116.5	746.4	1007.8	940.0	852.2	882.7	1140.1	1021.9	779.9	685.1	908.4	866.6	1024.6	1050.6	971.3	896.1	742.2	28 856.0
08-09	1127.3	1075.7	901.3	942.4	1129.2	724.5	732.4	960.7	765.9	838.1	842.6	775.0	809.9	987.6	898.8	970.6	785.4	644.7	665.8	730.6	680.0	888.2	593.7	606.2	541.6	679.4	624.5	724.4	794.0	673.9	24 112.4
09-10	1194.7	1060.6	928.0	874.0	1020.2	683.9	839.3	1031.3	795.0	653.9	821.5	809.0	884.3	947.8	868.2	920.5	850.8	676.2	821.8	873.3	764.1	886.2	665.9	572.5	805.5	751.7	723.5	683.5	761.9	837.9	24 407.0
10-11	1168.5	1099.7	990.3	969.7	1005	701.6	635.6	965.0	846.9	609.6	878.0	848.2	820.7	872.3	864.2	919.7	860.6	804.0	828.2	981.8	802.1	943.0	727.4	679.7	699.4	864.9	755.7	824.7	770.4	669.3	25 480.2
11-12	1138.7	1121.3	1031.1	930.2	976.4	788.2	686.4	920.4	838.3	642.6	744.5	790.1	775.5	886.8	934.9	915.1	832.9	849.8	910.0	1047.6	815.2	943.5	757.3	688.9	729.2	890.0	805.9	805.2	839.5	733.5	25 769.0
12-13	1174.9	1047.0	1013.1	970.0	943.3	728.0	731.4	914.2	847.7	756.9	756.6	862.3	798.8	921.1	975.1	922.2	898.6	937.6	880.8	1057.7	854.4	977.7	783.7	733.1	825.0	952.8	830.1	925.3	819.6	753.4	26 592.4
13-14	1151	1047.0	993.2	894.3	852.1	705.0	685.5	812.7	814.0	782.3	790.7	809.5	847.2	937.6	1012.9	966.4	864.3	972.3	886.0	1095.9	857.7	972.4	798.3	723.4	804.9	948.8	834.3	926.1	773.1	742.7	26 301.6
14-15	1169.8	953.1	921.4	816.7	848.1	673.8	703.3	844.4	802.2	723.8	682.9	784.3	865.8	903.7	1057	931.4	815.3	879.4	862.3	1100.3	849.6	972.1	791.4	687.9	759.0	912.9	820.0	952.5	801.1	705.8	25 591.3
15-16	1130.8	1001.8	962.3	811.0	853.4	693.7	706.7	862.2	802.5	691.2	761.8	833.1	895.8	911.9	906.9	924.9	858.7	841.6	918.9	1117.6	824.2	956.4	777.7	697.2	752.6	895.9	820.0	865.4	754.4	678.7	25 510.2
16-17	1075.3	993.0	921.2	706.9	883.9	712.0	649.6	876.5	803.6	675.2	799.2	806.0	918.7	920.1	1011.1	946.8	883.8	751.6	976.4	1111.4	843.4	871.5	742.8	701.1	657.5	902.9	785.0	740.0	679.4	609.6	24 955.5
17-18	1056.6	929.8	867.0	667.7	902.2	792.2	716.8	914.1	760.8	656.5	755.3	878.1	878.0	954.0	939.9	936.6	785.9	640.7	946.5	1039.2	833.1	882.3	709.9	613.2	565.1	850.1	729.5	696.5	767.9	692.3	24 157.8
18-19	1025.5	945.8	854.0	824.3	1019.8	861.0	793.1	926.1	817.1	637.7	855.4	786.0	801.2	1032.4	1032.4	935.4	675.1	682.8	742.1	917.9	821.5	853.6	680.9	617.4	698.8	678.6	915.1	818.3	700.2	24 609.9	
19-20	1151.9	932.5	957.0	904.6	967.6	798.8	931.3	886.6	878.7	652.8	852.2	848.7	801.9	982.9	898.8	939.7	697.9	753.2	686.1	896.4	801.0	708.8	677.5	744.8	630.5	682.0	767.5	973.4	708.7	24 887.7	
20-21	1249	1213.0	1386.8	1236.2	1287.7	1070.9	838.9	1152.1	1096.3	948.3	875.4	768.9	997.7	966.2	862.5	1051.5	998.6	957.7	965.1	1114.3	1011.2	819.2	759.1	874.9	848.9	924.2	863.3	855.1	805.0	812.8	29 615.8
21-22	1253.3	1257.1	1251.4	1209.8	1367.1	1298.8	917.5	1115.4	1084.4	941.7	893.7	883.6	989.5	845.3	835.3	1062	1056.7	1223.8	1104.0	1165.3	1037.7	1003.8	847.8	832.1	831.7	875.5	944.4	943.6	877.2	914.2	30 864.7
22-23	1262.9	1035.8	914.0	1040.9	1073.8	915.9	834.2	820.4	935.6	719.2	721.3	892.0	877.7	944.5	874.9	1074.1	940.6	1119.9	1042.4	1091.2	1064.8	875.2	742.3	868.8	690.7	855.8	833.0	876.2	986.8	1081.8	27 816.7
23-24	1030.8	826.4	959.8	942.3	961.8	909.1	829.0	927.6	907.1	829.9	835.7	801.7	837.8	986.7	909.7	976	860.1	1175.7	921.7	1024.7	915.9	870.8	802.8	931.6	719.5	935.0	884.5	803.2	948.1	1087.9	27 372.9
TOTAL	26 298.8	23 443.2	25 043.3	22 789.0	23 672.9	21 201.3	19 018.5	22 204.3	21 255.2	20 187.3	20 804.8	21 027.6	21 849.2	22 698.0	23 744.0	24 892.4	21 181.7	21 921.1	21 535.0	24 728.0	22 159.2	22 081.1	18 452.6	19 887.6	18 127.7	20 579.0	20 425.1	21 219.0	21 163.7	20 201.3	653 791.9

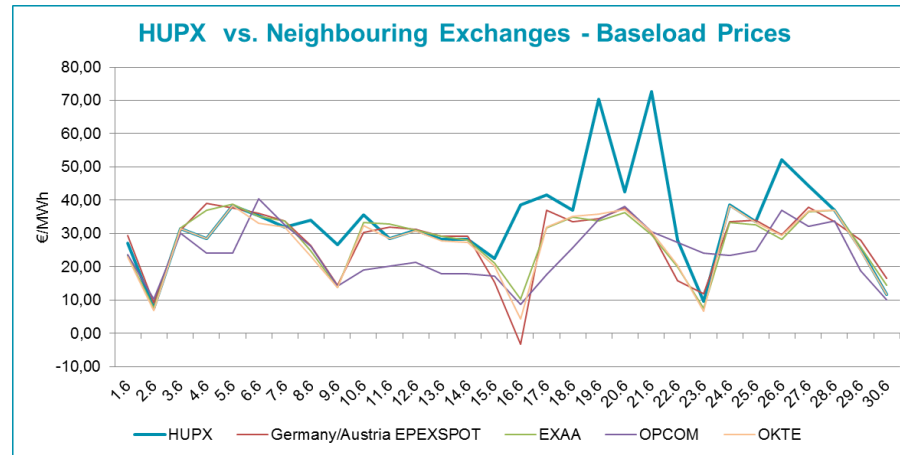
HUPX Day-Ahead Market Prices
€/MWh / Delivery day / hour

Delivery hour	06/01	06/02	06/03	06/04	06/05	06/06	06/07	06/08	06/09	06/10	06/11	06/12	06/13	06/14	06/15	06/16	06/17	06/18	06/19	06/20	06/21	06/22	06/23	06/24	06/25	06/26	06/27	06/28	06/29	06/30	AVG
00-01	25.00	1.53	14.10	1.98	29.00	22.00	27.87	27.68	18.73	17.96	11.00	22.44	22.54	19.03	31.08	10.30	22.00	27.60	29.13	29.48	37.05	25.50	6.26	22.53	26.00	20.13	28.70	31.08	25.57	14.00	21.58
01-02	23.00	0.01	11.87	0.06	23.00	18.00	21.00	25.05	12.30	12.58	12.00	18.26	18.10	11.43	25.70	4.06	16.73	24.17	25.00	24.72	24.83	18.00	1.80	17.84	22.40	16.00	25.01	27.58	21.14	9.50	17.04
02-03	20.43	-0.40	0.96	0.03	17.99	18.00	17.45	22.43	9.47	4.75	10.00	16.48	14.48	8.04	22.40	2.26	15.00	21.10	21.74	22.20	21.00	16.74	-1.00	14.81	20.00	15.00	22.34	24.30	17.56	8.00	14.12
03-04	18.13	-2.09	0.92	0.06	15.00	15.00	14.23	21.68	8.84	1.00	4.09	16.00	13.00	5.00	20.85	0.05	13.38	21.21	21.24	21.03	18.63	13.05	-2.00	13.00	18.30	12.18	20.60	20.26	16.65	6.50	12.19
04-05	17.43	-4.95	0.92	0.07	17.94	18.00	15.00	21.00	7.70	5.00	1.00	17.00	13.00	6.87	20.40	0.01	13.14	21.43	21.00	20.40	18.00	12.43	-3.00	13.00	16.93	12.56	21.07	21.00	16.40	4.99	12.19
05-06	10.00	-10.00	0.94	1.00	20.00	15.00	18.00	18.57	0.01	13.80	1.00	18.28	13.00	11.04	18.61	-1.95	18.97	22.86	22.74	23.10	20.00	12.07	-3.00	18.32	21.00	15.08	23.21	25.13	14.50	2.00	12.78
06-07	19.43	-8.50	33.29	28.00	40.00	41.10	36.18	17.30	0.01	32.91	35.02	33.40	32.08	25.57	21.47	-0.06	34.02	36.27	34.50	37.30	31.46	14.90	-1.00	29.70	31.00	30.00	35.47	33.51	19.00	0.01	25.11
07-08	25.59	-2.00	43.19	44.89	53.30	57.03	47.55	24.77	5.73	45.09	43.93	42.50	40.80	35.06	25.78	4.00	42.60	46.76	46.70	47.43	49.47	21.62	-0.54	38.81	41.10	39.10	74.36	43.74	26.14	5.10	35.32
08-09	32.06	0.11	46.10	42.02	57.92	53.00	49.26	75.05	16.08	49.00	45.00	43.03	38.60	36.40	26.09	2.56	42.90	47.60	48.60	49.20	42.00	27.00	0.19	47.08	43.00	41.50	48.04				

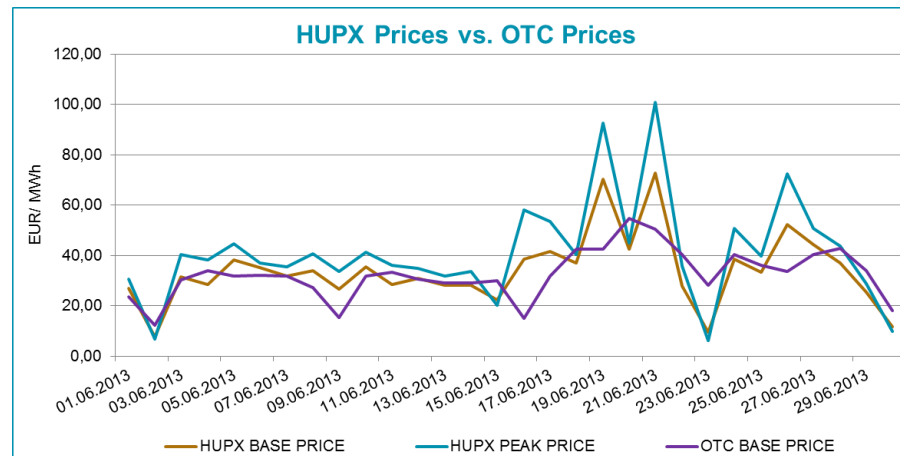
HUPX prices vs. Neighbouring Exchanges – Hourly Prices



HUPX prices vs. Neighbouring Exchanges – Base Prices



HUPX vs. OTC



Diff. BL.	HUPX↔OTC	1,41
Diff. PL.	HUPX↔OTC	4,69

Average of aggregated OFFERS/BIDS 01/06/2013-30/06/2013

Data shown in the table reflects the average hourly aggregated maximum sell and buy volumes, not considering price steps.

Hour	Offers	Bids	Index volumes
H1	1 183,2	1 356,3	929,7
H2	1 342,3	1 298,8	984,7
H3	1 475,6	1 221,2	1 062,4
H4	1 503,7	1 180,7	1 055,0
H5	1 505,7	1 168,9	1 036,4
H6	1 400,8	1 138,7	962,2
H7	1 131,1	1 237,5	866,1
H8	1 144,2	1 390,5	961,9
H9	1 045,5	1 262,3	803,7
H10	1 012,6	1 370,3	813,6
H11	993,6	1 458,7	849,3
H12	958,7	1 492,4	859,0
H13	970,1	1 527,1	886,4
H14	950,7	1 464,3	876,7
H15	954,6	1 422,2	853,0
H16	966,2	1 409,9	850,3
H17	976,9	1 376,3	831,9
H18	998,1	1 308,9	805,3
H19	1 068,3	1 238,0	820,3
H20	1 092,5	1 251,3	829,6
H21	1 105,7	1 485,3	987,2
H22	1 044,4	1 601,8	1 028,8
H23	1 089,4	1 408,9	927,2
H24	1 363,5	1 403,0	912,4
Σ	27 277,2	32 473,3	21 793,1

Base	
MIN (offer)	950,7
MAX (offer)	1 505,7
MIN (bid)	1 138,7
MAX (bid)	1 601,8
Average (offer)	1 136,5
Average (bid)	1 353,1

Peak	
MIN (offer)	950,7
MAX (offer)	1 092,5
MIN (bid)	1 238,0
MAX (bid)	1 527,1
Average (offer)	999,0
Average (bid)	1 381,8

Aggregated OFFERS/BIDS 01/06/2013-30/06/2013

Data shown in the table reflects hourly aggregated maximum sell and buy volumes, not considering price steps.

Hour	Offers	Bids	Index volumes
H1	35 496,9	40 689,2	27 892,2
H2	40 270,4	38 962,9	29 539,7
H3	44 267,8	36 637,1	31 871,8
H4	45 111,3	35 421,6	31 649,1
H5	45 170,6	35 065,5	31 090,5
H6	42 022,5	34 161,5	28 865,4
H7	33 932,0	37 125,2	25 982,1
H8	34 326,1	41 713,6	28 856,0
H9	31 366,2	37 868,1	24 112,4
H10	30 379,2	41 110,4	24 407,0
H11	29 806,5	43 760,0	25 480,2
H12	28 760,4	44 770,9	25 769,0
H13	29 102,1	45 813,8	26 592,4
H14	28 520,2	43 929,3	26 301,6
H15	28 637,6	42 665,8	25 591,3
H16	28 985,0	42 295,5	25 510,2
H17	29 306,8	41 289,4	24 955,5
H18	29 941,8	39 266,3	24 157,8
H19	32 048,6	37 138,5	24 609,9
H20	32 775,3	37 538,8	24 887,7
H21	33 170,2	44 560,0	29 615,8
H22	31 333,0	48 054,9	30 864,7
H23	32 680,7	42 268,0	27 816,7
H24	40 903,7	42 091,3	27 372,9
Σ	818 314,9	974 197,6	653 791,9

Base	
MIN (offer)	28 520,2
MAX (offer)	45 170,6
MIN (bid)	34 161,5
MAX (bid)	48 054,9
Average (offer)	34 096,5
Average (bid)	40 591,6

Peak	
MIN (offer)	28 520,2
MAX (offer)	32 775,3
MIN (bid)	37 138,5
MAX (bid)	45 813,8
Average (offer)	29 969,1
Average (bid)	41 453,9